

## Instructions for use Magnetic cabinet lock

Brand: WunderHippo

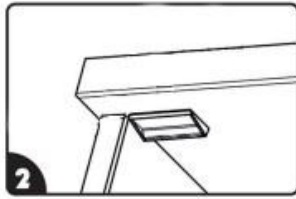
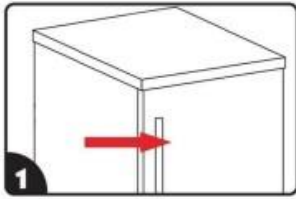
Model number: 500100, 500101, 500102, 500103

**ATTENTION:** For the safety and health of your child! Please follow the enclosed operating instructions! Install the device only in accordance with these instructions.

Read these instructions carefully before installing and using the device. The child protection function of the locking device may be impaired if the instructions are not followed. The instructions must be kept for future reference.

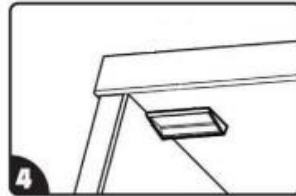
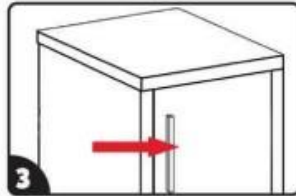
### Installation instructions

1. Please ensure that the surface on which you wish to install the child safety lock is clean, i.e. free from dust, oil, etc.
2. Raise the lever on the lock. This will deactivate the lock function.



#### 1. Installation of the lock

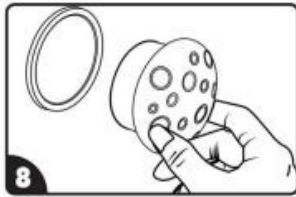
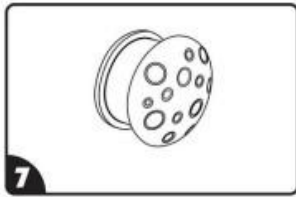
The installation method depends on the type of your cabinet. For type 1, the door does not go into the cabinet (Figure 1). Stick the short side of the locking element tightly to the inside of the cabinet, ensuring that the long side does not extend beyond the cabinet's exterior (Figure 2).



**Type 2:** The door closes into the cabinet frame (Figure 3). Move the lock deep enough into the cabinet so that its depth corresponds to the width of the cabinet door (Figure 4).

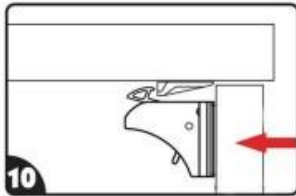
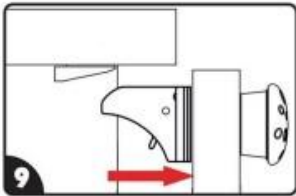


**2. Installation of the latch.** Connect the latch and the lock to the installation aid (Figures 5-6). Pull off the back of the latch and lock. Place the installation aid at the top/side of the cabinet. Close the cabinet. Remove the installation aid.



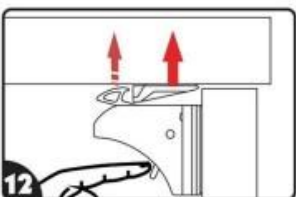
#### 3. Key.

Keep the key out of the reach of children (Figures 7-8).



#### 4. Use.

Hold the magnetic key from the outside directly at the point where the lock is fitted on the inside of the cabinet (Figures 9-10). This unlocks the lock.



The lock has two positions: Lever up - lock is deactivated (Figure 11). If the lock function needs to be reactivated, please push the lever down (Figure 12). Place the key back on the key holder to prevent losing it. After the parts have been glued on, wait 24 hours before use to allow the adhesive to take effect.

## **WARNINGS**

- This locking device makes it difficult for small children to access the contents of a cupboard or drawer, however, it cannot guarantee complete safety, as some children may be able to open the lock.
- The device must be replaced if any part is missing, broken, or damaged.
- The product is not suitable for reuse after disassembly.
- The use of the locking device is only intended for indoor areas for domestic use.
- This cabinet lock is designed for the following cabinet and drawer materials: Wood, plastic (acrylic, polycarbonate, ABS), glass, stone, marble, ceramic, stainless steel, aluminum.
- The gap into which a child could potentially insert their fingers should not exceed 30 mm when the drawer or cabinet door is slightly opened with the locking mechanism engaged.
- Keep small parts out of the reach of children to avoid the risk of suffocation.
- Check the safety locks regularly to ensure that they are secure and working properly.
- Do not rely solely on the child safety locks. Actively supervise your children, especially in areas with potential hazards.

## **Dismantling**

If you no longer need the child safety locks, they can be removed from the furniture without leaving any residue.

1. Heat the 3M adhesive film that holds the child safety lock to the furniture for about 15-20 seconds with a hairdryer (max. 2200W). If the hairdryer has different heat settings, start with the lowest setting! **IMPORTANT:** Please do not use a lighter or an industrial hot air blower, as these could damage your furniture and also pose a risk of fire and death. Screwdrivers, knives etc. are also unsuitable for residue-free removal. Hold the hairdryer at least 20 cm away from the lock and turn it on.
2. Direct the hot air jet towards the child safety lock.
3. Carefully begin to remove the 3M adhesive sticker from the sides of the childproof lock. The childproof lock will detach from the furniture.
4. If the childproof lock still cannot be removed, you can gradually reduce the distance between the hairdryer and the childproof lock OR carefully increase the temperature of the hairdryer.
5. Then continue by carefully pulling at the sides of the childproof lock as described above.
6. The adhesive will weaken, allowing you to remove the childproof lock completely.

Viktor Bulchak

Sole Proprietorship

Nachtweide 5B

38122 Braunschweig

Germany

E-Mail: [v.bulchak@gmail.com](mailto:v.bulchak@gmail.com)

[www.wunderhippo.de](http://www.wunderhippo.de)